

Universal  
Series



[www.carrier.com.pr](http://www.carrier.com.pr)  
Carrier Enterprise  
Puerto Rico Inc.



## CONDENSING INVERTER

Model		Outdoor	CA418AX036-V3B1C	CA418AX060-V3B1C
Power Supply		V~,Hz,Ph	208-230,60,1	208-230,60,1
Capacity	Type		ROTARY	ROTARY
	Brand		MITSUBISHI	HIGHLY
	Capacity Normal Break	W	34,000	58,000
	Input	W	2340	3660
	Rated Current	A	9.3	15.8
Thermal Protection temp.		°C	/	115
Noise Level		dB(A)	57	62
Dimension	Net (W×D×H)	Inches	29.13*29.13*24.92	740*740*835
	Packing (W×D×H)	Inches	30.31*30.31*29.392	770*770*955
Weight	Net	lbs	74	88
	Gross	lbs	83	97
Refrigerant Type		Type	R410a	R410a
Refrigerant Pipe	Liquid Side	Inches	3/8"	3/8"
	Gas Side	Inches	5/8"	3/4"
	Max. Length	feet	98	98
	Max. Height	feet	49	49

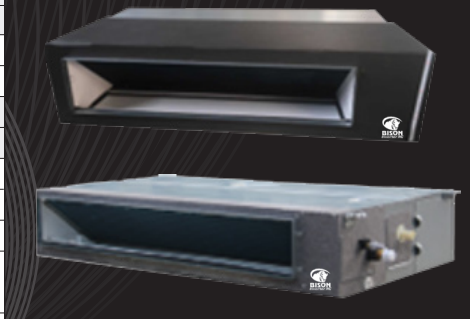


- Inverter control
- Heavy Gauge Steel Cabinet
- Sound Levels down to 56 DB
- Low Ambient Cooling down to 5 deg ° F
- R410A Refrigerant
- Multi-point Diagnostics

## SLIM DUCT EVAPORATOR

Model		Indoor Outdoor	CC418BX060-E3B1C CA418AX060-V3B1C
Power Supply		V~,Hz,Ph	208-230,50/60,1
Capacity	Cooling	Btu/h	58000
		kW	17.00
Electric Data	Rated Cooling Power Input	W	5667
	Rated Cooling Current	A	25
Performance	EER	W/W	3.00
	SEER	Btu/(h*w)	18.00
Indoor Unit	Indoor Air Flow (Hi/Mi/Lo)	m3/h	3150/2850/2500
		CFM	1853/1676/1471
	Noise Level (Hi/Mi/Lo)	dB(A)	52/50/47
	External Static Pressure (Standard)	Pa	50
	External Static Pressure (Range)	Pa	0~160
	Net Dimension (W*D*H)	Inches	55.12x32.28x14.96
	Packing Dimension (W*D*H)	Inches	32.20x34.65x17.72
	Net Weight	lbs	25
Gross Weight	lbs	28	
	Liquid Side	In	3/8"
Refrigerant Pipe	Gas Side	In	3/4"
	Drainage	In	R3/4in(DN20)
Wired Controller		/	XK05

1. Parameters above are all measured when the connecting pipe is 5 meters.
2. Parameters above may be modified as product improvement. We keep the right to change the product specifications without prior notice, please take the parameters listed on the nameplate as criterion



- Medium Static Pressure Capability
- Slim Line Construction 7-7/8" high
- Flexible Return Air From Bottom or Rear
- Internal Condensate Drain Pump
- Sentry Float Switch
- Environmentally Safe R-410A Refrigerant

## FLOOR CEILING INVERTER

Model		Indoor Outdoor	CF418BX036-M3B1C CA418AX036-V3B1C	CF418BX060-M3B1C CA418AX060-V3B1C
Power Supply		V~,Hz,Ph	208-230,60,1	208-230,60,1
Capacity	Cooling	Btu/h	36000	52000
		kW	10.55	15.24
Heating	Btu/h	/	/	
	kW	/	/	
Electric Data	Rated Cooling Power Input	W	3297	6096
	Rated Cooling Current	A	14.63	27.05
Performance	EER	W/W	3.20	2.50
	SEER	Btu/(h*w)	18.00	17.00
Indoor Unit	Indoor Air Flow (Hi/Mi/Lo)	m3/h	2000/1900/1700/1400	2200/2100/1700/1500
		CFM	1176/1117/1000/823	1294/1235/1000/882
	Noise Level (Hi/Mi/Lo)	dB(A)	48/47/44/41	52/46/43
	Net Dimension (W*D*H)	In	62.99x27.17x9.25	62.99x27.17x9.25
	Packing Dimension (W*D*H)	In	66.14x30.31x12.80	66.14x30.31x12.80
	Net Weight	lbs	41	41
Gross Weight	lbs	48	48	
	Liquid Side	In	3/8"	3/8"
Refrigerant Pipe	Gas Side	In	5/8"	3/4"
	Drainage	In	R3/4in(DN20)	R3/4in(DN20)
Wired Controller			YKR-L/300-HYE	YKR-K/001E



- 4-way Discharge Air
- Multi Speed Fan
- IR Remote Control
- Tether Wired Controller
- Swing Louver
- Remote Control Lockout
- Power Failure Recovery

## CASSETTE INVERTER

Model		Indoor Outdoor	CK418BX060-C3B1C CA418AX060-V3B1C
Power Supply		V~,Hz,Ph	208-230,60,1
Capacity	Cooling	Btu/h	52000
		kW	15.24
Electric Data	Rated Cooling Power Input	W	1787
	Rated Cooling Current	A	7.93
Performance	EER	BTU(h*w)	8.53
	SEER	Btu/(h*w)	17.00
Indoor Unit	Indoor Air Flow (Hi/Mi/Lo)	m3/h	2000/1700/1600
		CFM	1176/1000/941
	Noise Level (Hi/Mi/Lo)	dB(A)	53/51/48
	Net Dimension (W*D*H)	Inches	33.07X33.07x11.34
	Packing Dimension (W*D*H)	Inches	35.83x35.83x13.78
	Net Weight	lbs	13
Gross Weight	lbs	16	
	Net Dimension (W*D*H)	In	33.07X33.07x11.34
Panel	Packing Dimension (W*D*H)	In	35.83x35.83x13.78
	Net Weight	Kg	5.7
Gross Weight	Kg	8.3	
	Liquid Side	In	3/8"
Refrigerant Pipe	Gas Side	In	3/4"
	Drainage	In	R3/4in



- 4 - way Discharge Air
- Multi Speed Fan
- Remote Control Lockout
- Swing Louver
- Cleanable Air Filter
- Decorative Discharge Air Grille (sold separately)
- IR Remote Control and Tether Wired Controller
- Power Failure Recovery
- Internal Condensate Drain Pump
- Sentry Float Switch

1. Parameters above are all measured when the connecting pipe is 5 meters.
2. Parameters above may be modified as product improvement. We keep the right to change the product specifications without prior notice, please take the parameters listed on the nameplate as criterion